

VW5900 Vibration Welder

Table Size 72" (1829mm) by 24" (610mm)



FEATURES

- Electromechanical vibration head assembly (200-240Hz)
- Super rigid four rail table slide system
- One piece flame cut bridge (heaviest in class, in the industry)
- Solid state 65hp digital variable frequency drive
- Hydraulic lift/clamp force max. 5,500 lbs. (31,000 N), 20 gallon (75.6 L) reservoir
- Real time graphing of amplitude, force and distance
- B&R 15" color industrial computer HMI
- B&R input and output for all standard machine functions
- Intuitive and interactive comprehensive help menu
- Part parameter monitoring with programmable limits
- Multilingual capabilities (English, Spanish, German, Japanese, Chinese, French, Czech)
- Automatic tuning with auto ping mode
- Programmable amplitude 0.020" to 0.070" (0.5 to 1.8 mm)
- Weld by time or weld by distance
- Interior work light
- Optical zero force cycle activation switches
- Light Curtain for single switch activation
- Dual external utility outlets
- Programmable amplitude and pressure profile, up to 5 steps

SPECIFICATIONS

- Table size 72" x 24" (1829mm x 610mm) (also max. tool size*)
- Table opening 58" by 12" (1470 x 305) with max. depth 20" (500mm) [except F/B center strip 3" (75mm) wide with depth 1/2" (12mm)]**
- Upper tool weight 110-200 pounds (50-90kg)
- Low 41" (1040mm) lift table height
- 20" (500mm) Stroke, 25" (630mm) Max daylight
- Door opening 26" high x 76" wide (660mm x 1931mm)
- Less than 80 dB in operation (continuous measurement)

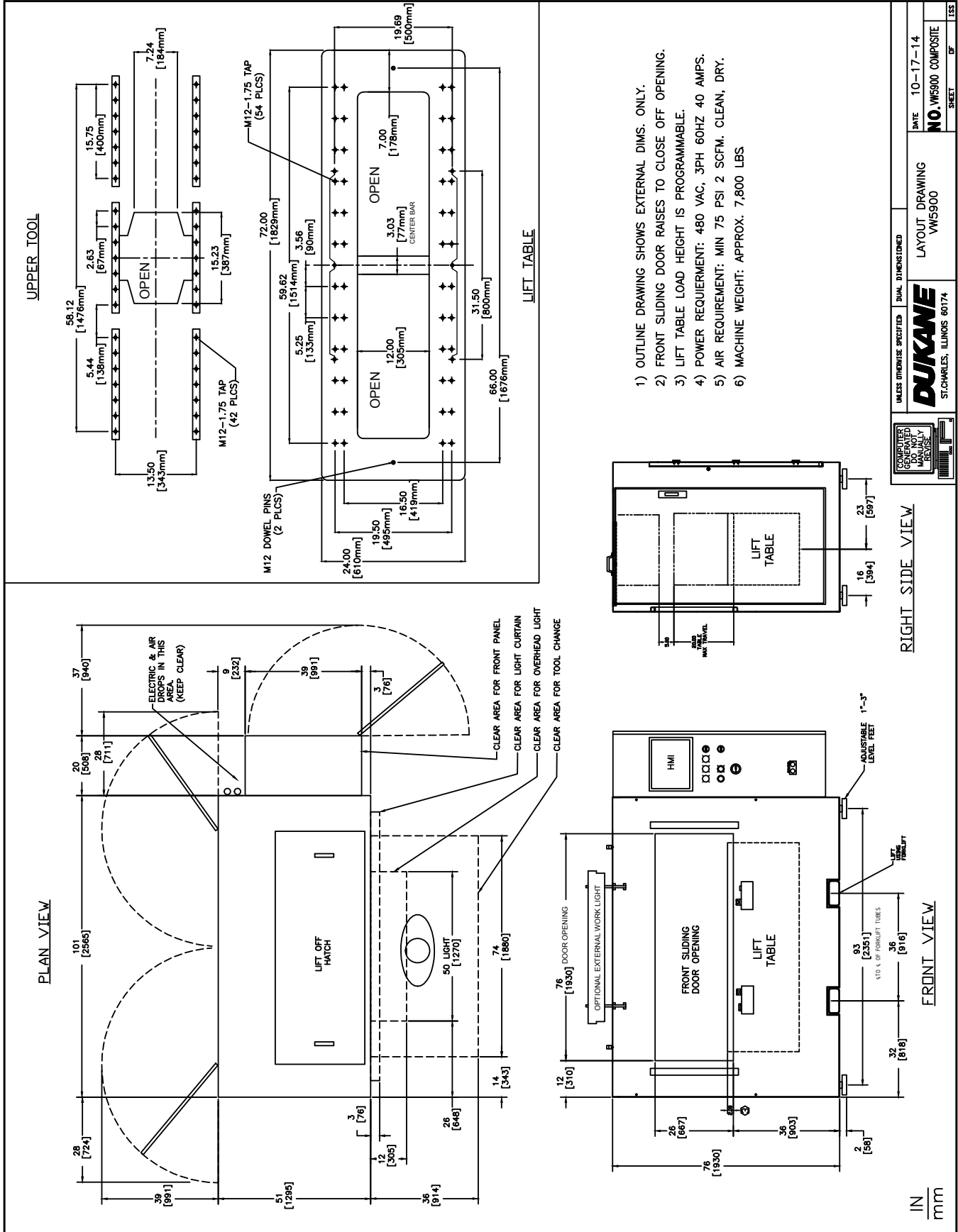
OPTIONS

- Position adjustable cycle activation switches
- Exterior work light
- Optional PLC for custom functions (will not run standard machine operation)
- Custom paint per customer specification
- Rear sliding door for pass-through operation
- Programmable pneumatic clamp or eject valves and/or programmable part-in-place sensing
- Custom quoted machines with non-standard: frame sizes, lift tables, stroke lengths, etc., using standard vibration heads available.

* Tooling can in some instances overhang the back of the table by a modest amount. Consult Dukane for more information.

** Custom lift table or custom frame can be quoted to allow for an uninterrupted bucket of greater depth.

VW5900 Vibration Welder Dimensions



Electric Service Required: 480V, 3 Phase, 40 Amps (custom input voltage kits available)
 Pneumatic Service Required: 75 to 90PSI (5-6 Bar)
 Approximate Shipping Weight 7800 lbs, (3546 kg)

Note: All specifications are subject to change without notice. Please consult Dukane for any updated information.



Vibe #14-0063-00

UNLESS OTHERWISE SPECIFIED	DUAL DIMENSIONED	LAYOUT DRAWING	DATE
NO. WMS900 COMPOSITE	WMS900	10-17-14	ISS
ST. CHARLES, ILLINOIS 60174	DUKANE	NO. WMS900 COMPOSITE	OF
GENERATED BY: [] DATE: [] REVISION: []			