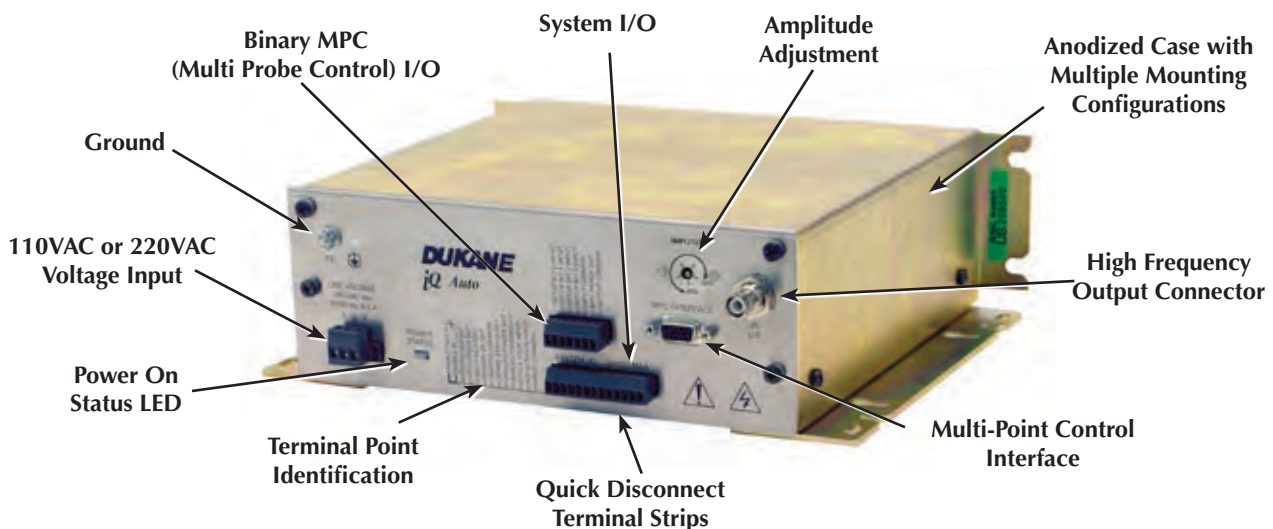


## ULTRASONIC AUTOMATION READY POWER SUPPLY **AUTO**

The *iQ* Auto, 40 khz, 600 watt generator is specifically designed to meet the machine builder's requirements. This robust power supply will provide power to multiple Dukane designed probes for years of trouble free service. This unit may be use as a stand-alone generator or can be used to interfaced with the Dukane Multi-Point Controller (MPC), to run spot weld or staking applications.



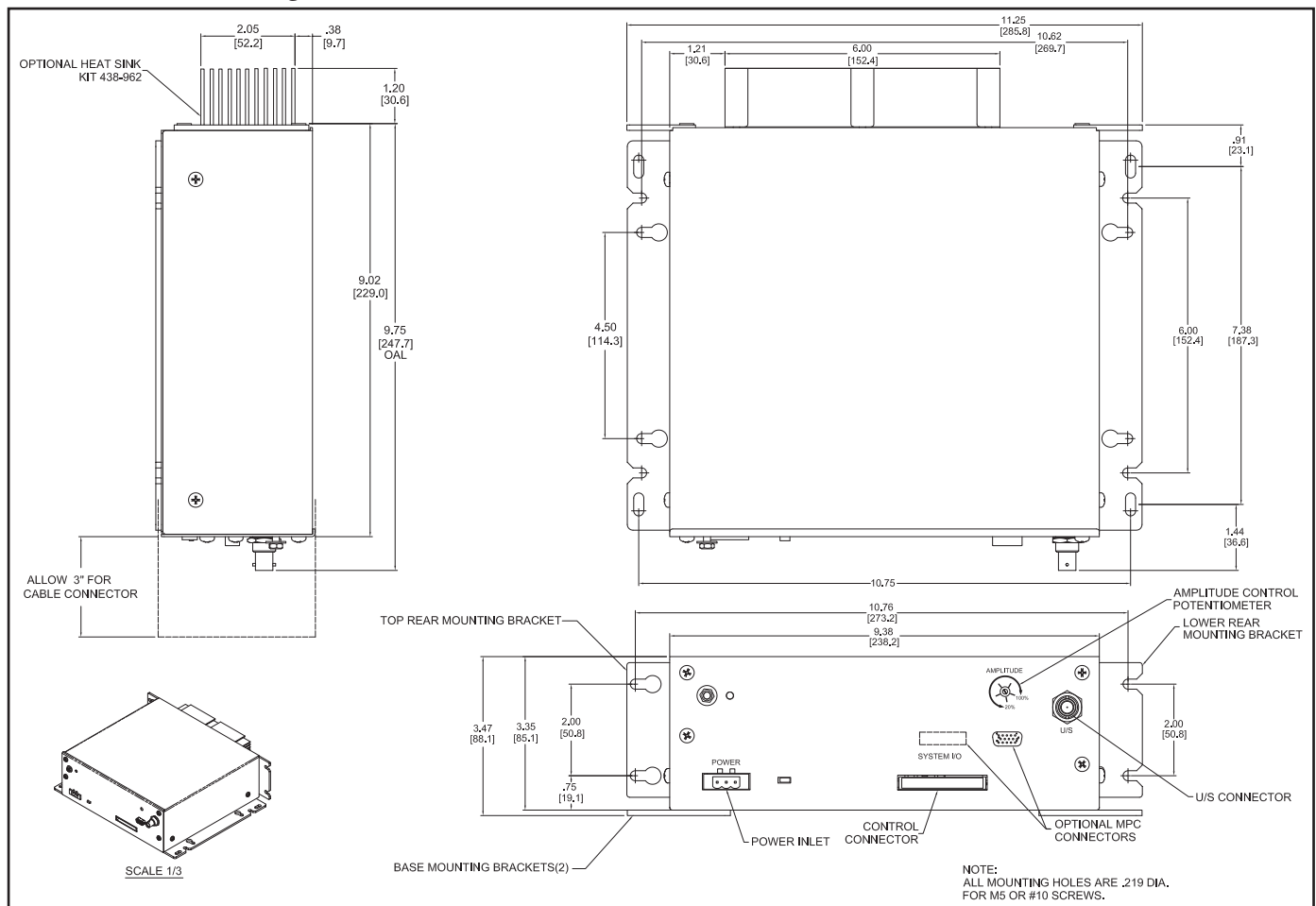
### FEATURES

- **600 watt 40 kHz digital ultrasonic power supply.**
- **Electrical /control cabinet mounting.** Installs inside cabinet. No special mounting racks required.
- **Simple point to point wiring** eliminates need for expensive I/O cables
- **Single point or multi point control MPC ready.** Flexibility for single probe or direct connection to Dukane's patented MPC (Multi-Point Controller).
- **Binary logic** to control probe selection is standard
- **Quick disconnect terminal strips.** Fast, easy installation and removal to enhance serviceability.
- **Metal case and large RFI filter.** Eliminates noise emissions
- **Analog power output.** Allows for power monitoring and energy calculations for closed loop welding, in the custom system applications.
- **Fault status output.** True overload output status and separate system faults.
- **Multiple mounting methods.** Allows for high density deep panel installation or for low density thin panel installation.

### Options

- **iQ LinQ** serial PLC control and programming capability.
- External cooling package for high duty cycle applications.

# iQ Auto Generator Diagram



## System I/O Connector Signals

Pin	Signal Name
1	Enable Out (+22V current limited)
2	Enable In (jumper to Pin1, without an E-Stop switch)
3	Overload Out (system overload status output)
4	U/S Status Out
5	Any Fault Out
6	Power OK Out
7	Output Common (chassis ground - non-isolated)
8	Spare Status Out (programmable status output)
9	Analog Power Out +
10	Analog Power Out - (analog monitor signal common, non-isolated)
11	Cycle Stop Input (automation cycle stop input)
12	U/S Active Input
13	Input Common (electrically isolated from chassis ground)

## MPC I/O Connector Signals

Pin	Signal Name
1	Setup Bit 0 Input
2	Setup Bit 1 Input
3	Setup Bit 2 Input
4	Setup Bit 3 Input
5	Input Common
6	MPC Ready Out
7	Output Common

## Specifications

Frequency	40 kHz
Power	600 W
Weight	10.7 lb (4.9 kg)
Dimensions	9.4" Width, 3.5" Height, 9.75" Depth
	23.9 cm Width, 9 cm Height, 24.8cm Depth
Input Power Requirements	200-240 VAC 50/60 Hz @ 6.3 amps
	100-110 VAC 50/60 Hz @ 15 amps